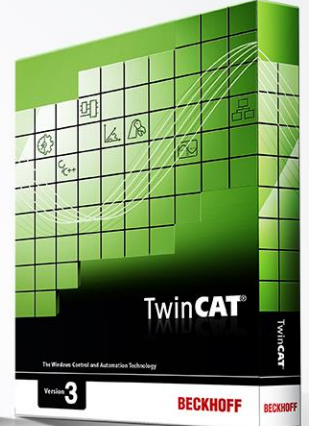
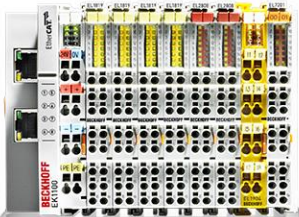


Holder for Beckhoff Panel PC and Control Panel

BECKHOFF



- Beckhoff gives three opportunities to present and hold the Control Panel and Panel PCs
- 1. C9900-M337 – stand for mounting arm adapter
- 2. C9900-Z317 – Panel holder
- 3. C9900-Z324 – Panel presenter



C9900-M337 | Stand

BECKHOFF

- mounting arm adapter for Rittal and Rolec mounting arm systems with 48 mm tube
- for a permanent installation, four additional M6 x 9 mm threads are available
- anodized aluminum matches the elegant design of the Beckhoff Panel PCs and Control Panel
- for the comfortable use at the desk



- The stand is suitable with following Beckhoff Panel PCs and Control Panel:
 - CP32xx-00x0 with C9900-M184
 - CP37xx-00x0 with C9900-M184
 - CP39xx-00x0 with C9900-M751 or C9900-M753
 - CP72xx-00xx-00x0 with C9900-M161 or C9900-M163



C9900-Z317 | Panel holder

BECKHOFF

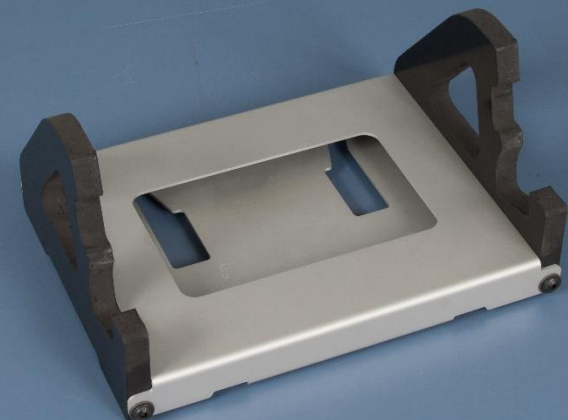
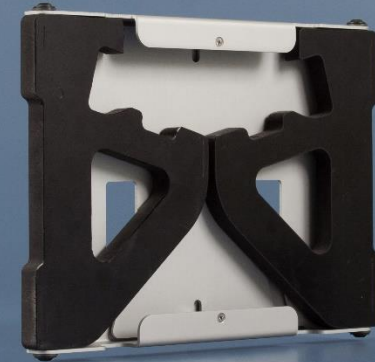
- Panel holder is suitable for panels without mounting arm adapter
- Safe stand
- Can be used with many key extensions
- Optimized for big panel
- Low weight



C9900-Z324 | Panel Presenter

BECKHOFF

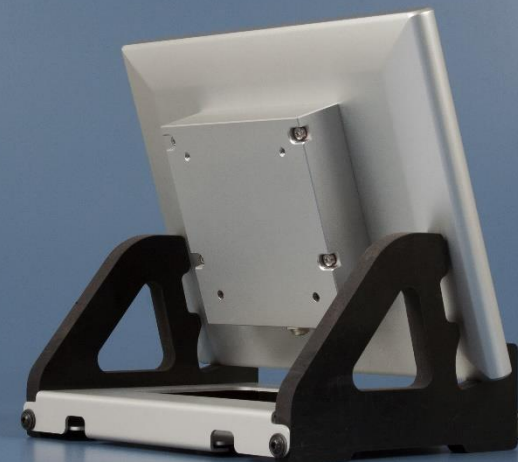
- Foldable presenter for Panel PCs and Control Panel
- Transportable
- Easy to stow
- Simple handling
- Plates are made of anodized aluminum
- Dimensions approximately: 290 x 25 mm x 210 (W x H x D)



- Can be used with many key extensions
- Cutouts for cables located on the backside
- Sides can't be moved when the holder is in place



- The holder suits Beckhoff Panel PCs and Control Panel from 11 up to 24 inch.
- Preferred for CP2xxx and CP3xxx, with exception of some CP22xx and CP37xx types
- Elderly Panel PCs and Control Panel generations are not all compatible e.g.:
 - CP79x3
 - CP6xxx
 - C33xxx
 - C36xxx



Picture comparison C9900-Z317 & C9900-Z324

BECKHOFF

