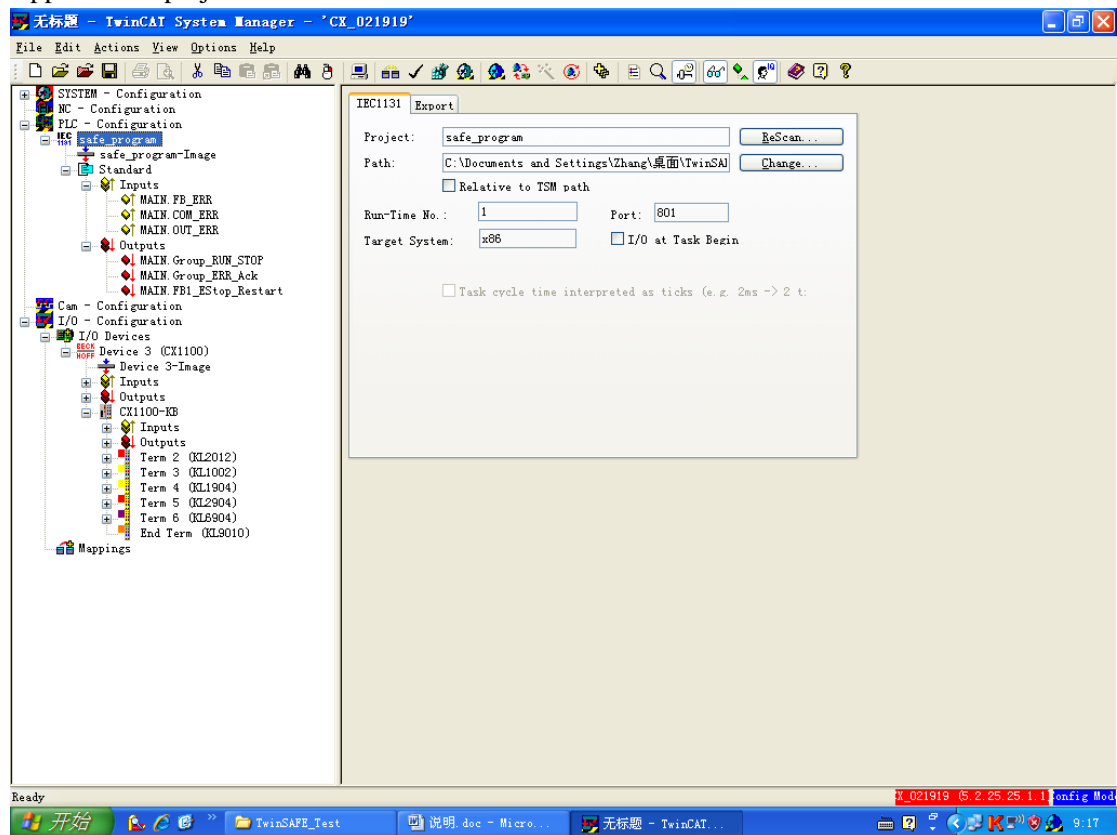
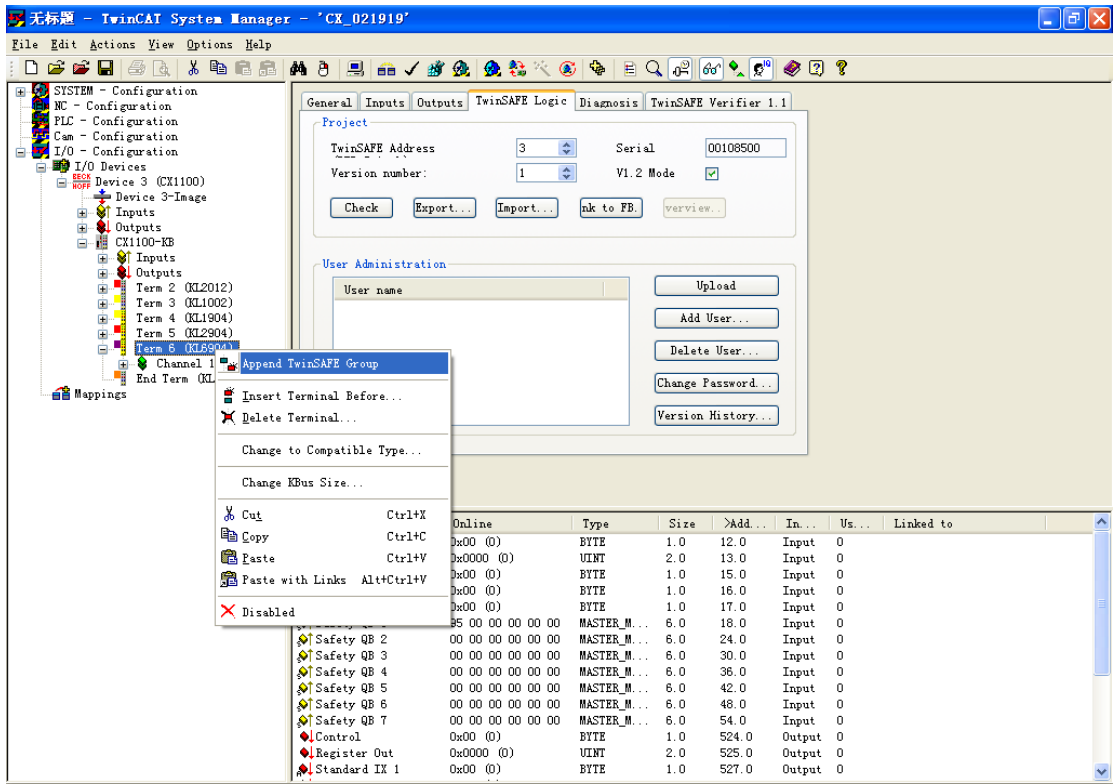


TwinSAFE Estop FB 简单配置过程

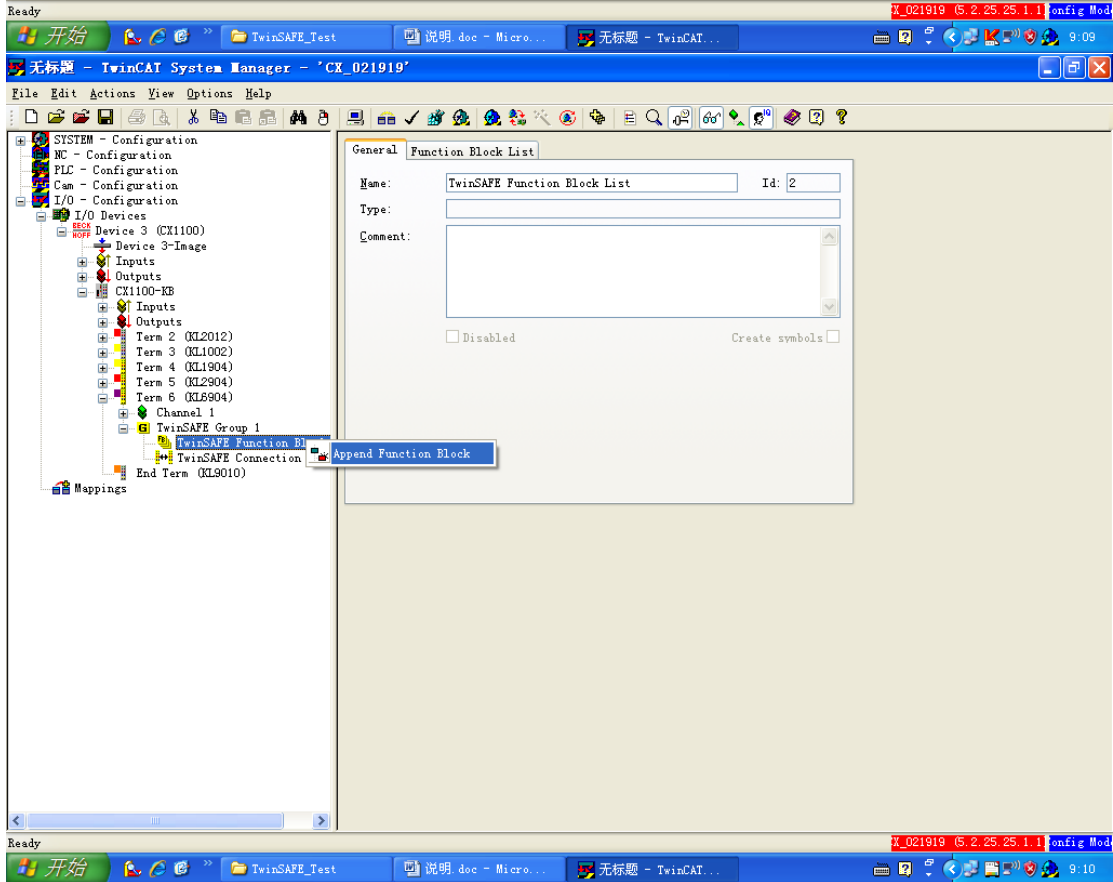
- 1 System manager 扫描硬件。
- 2 Append PLC project



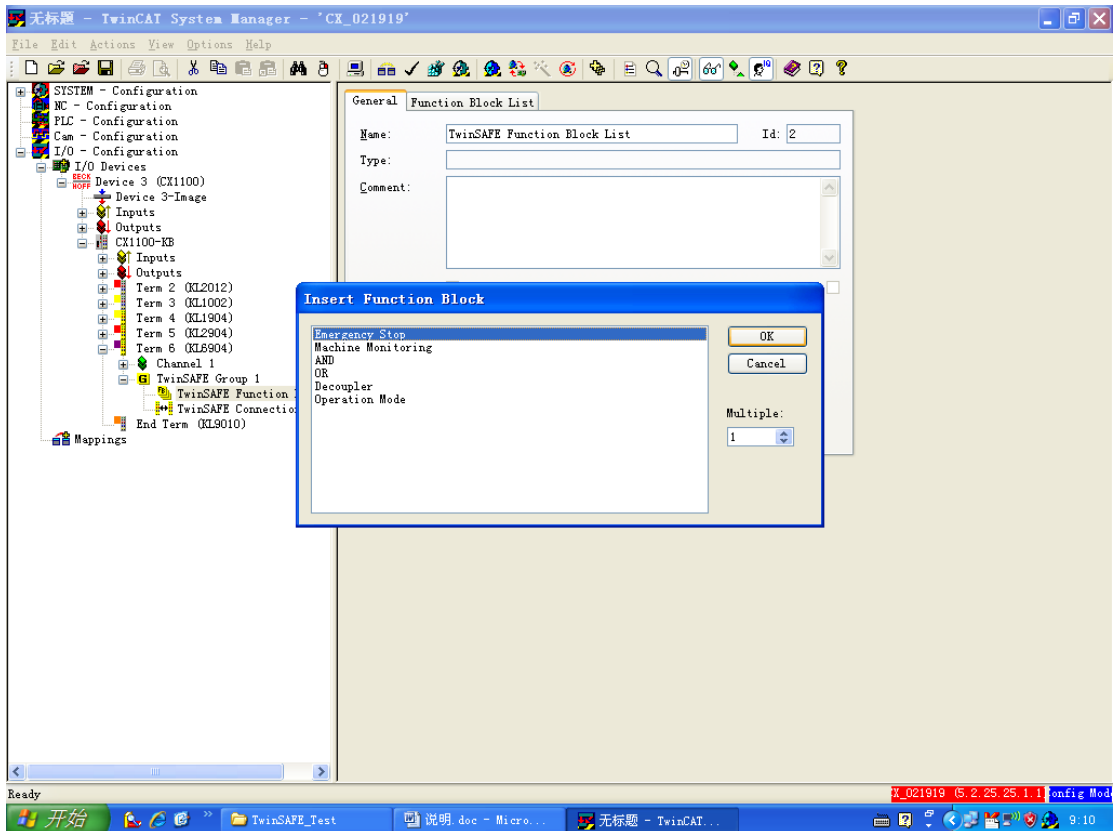
- 3 KL1904 KL2904 KL6904 的 FAddress 配置为和模块侧面的拨码相一致。注意 KL1904 KL2904 要 Write。



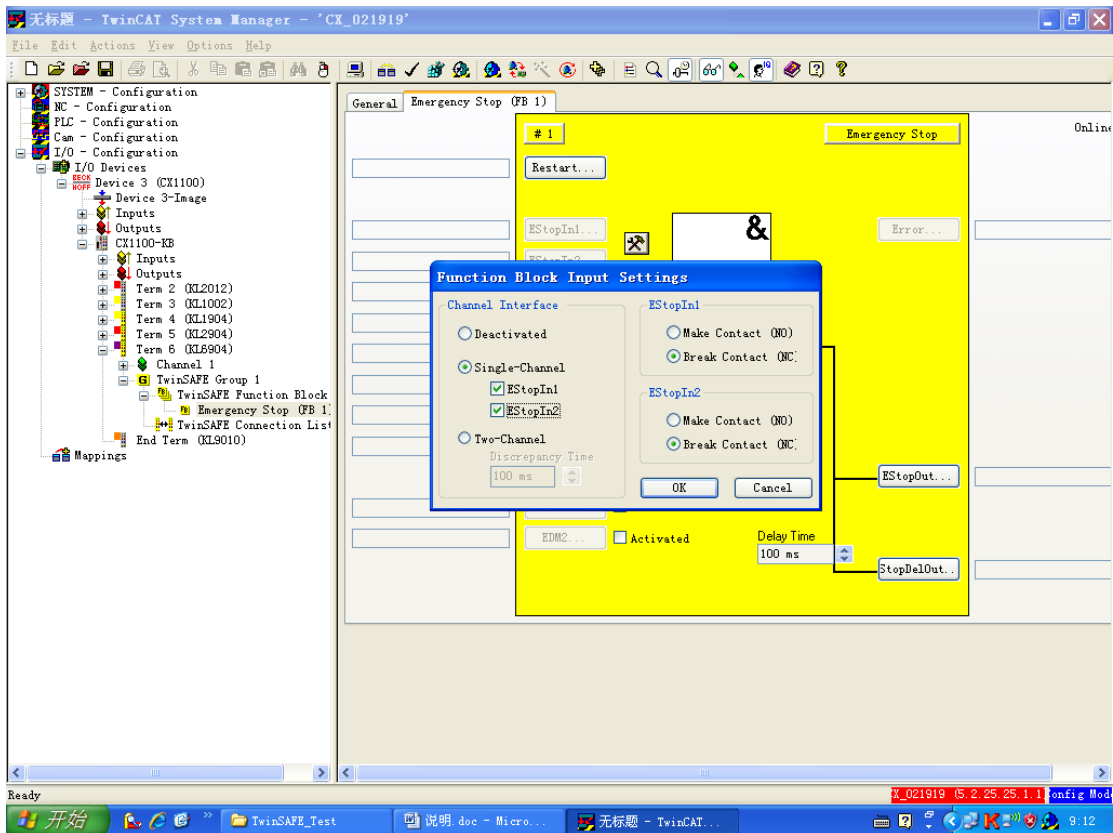
4



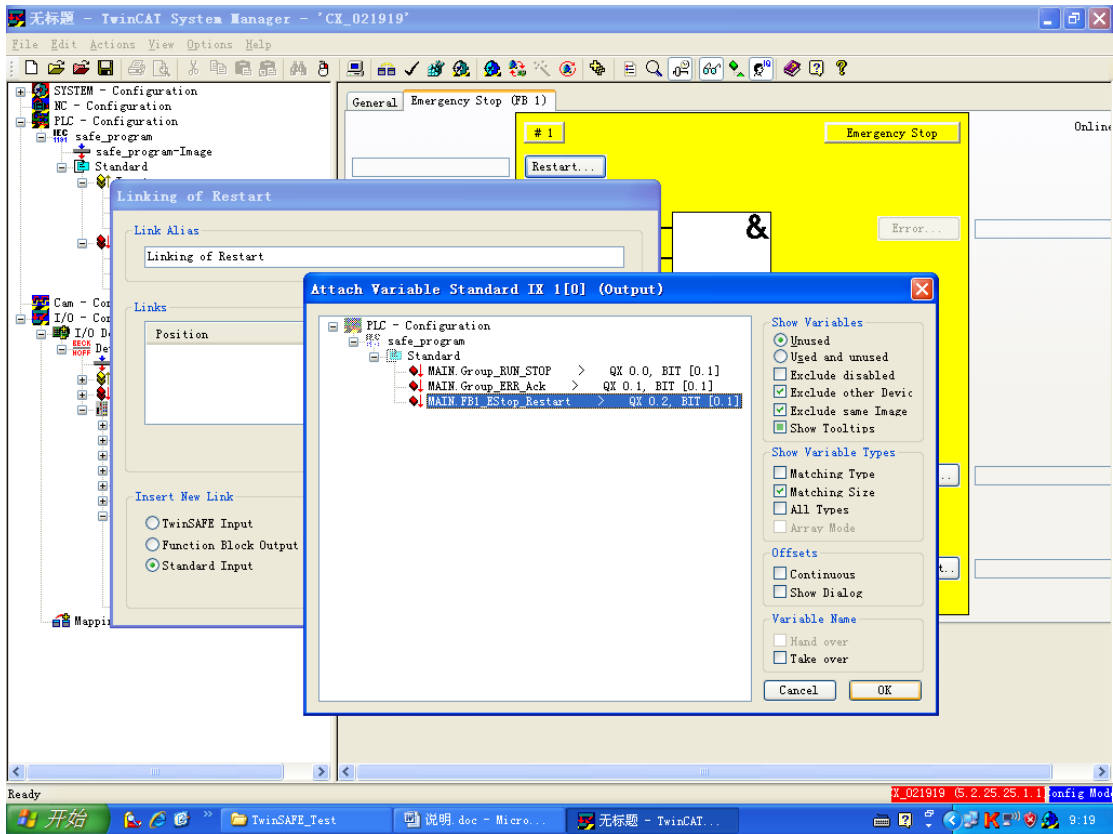
5



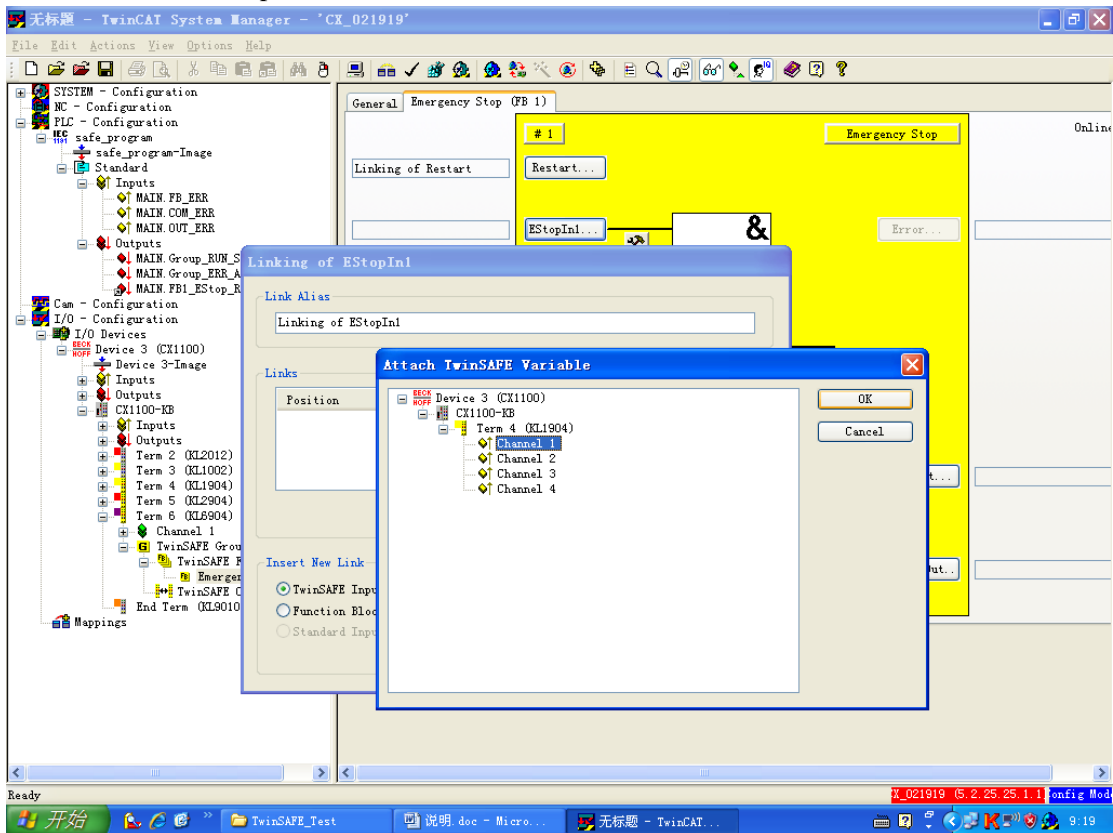
配置急停的一个输入通道。

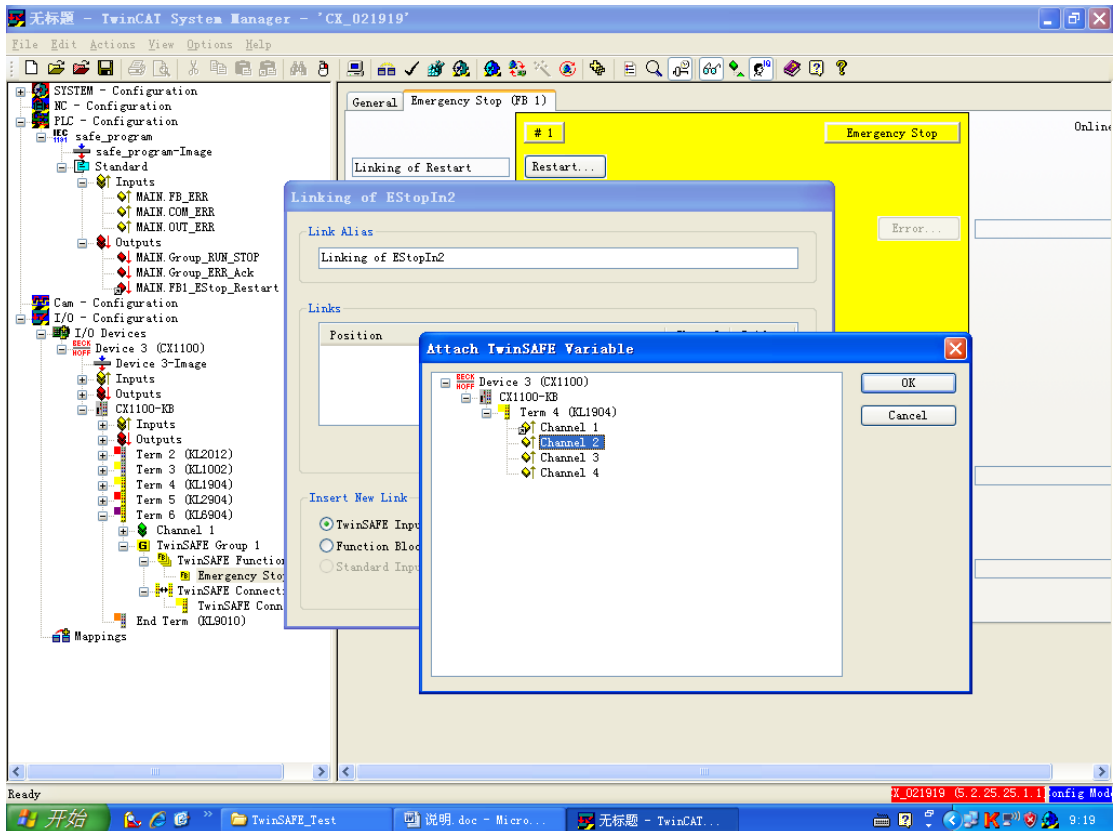


Link 急停 FB 的 Restart。

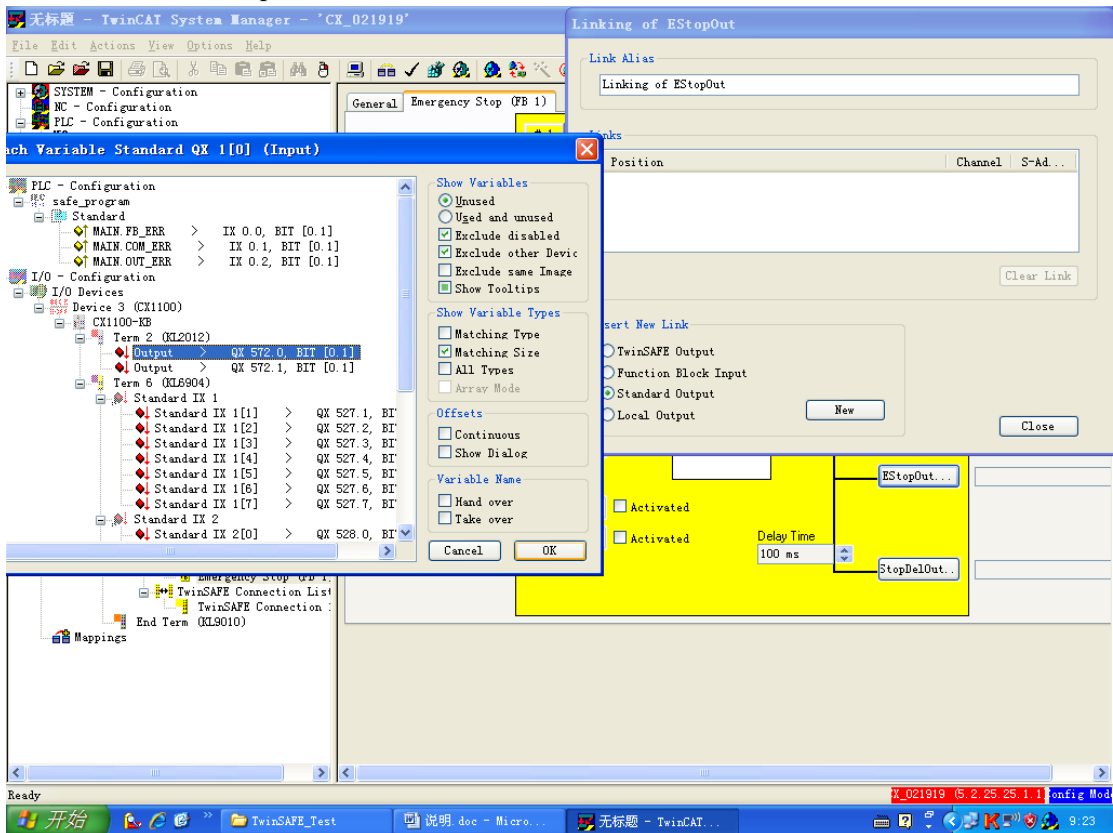


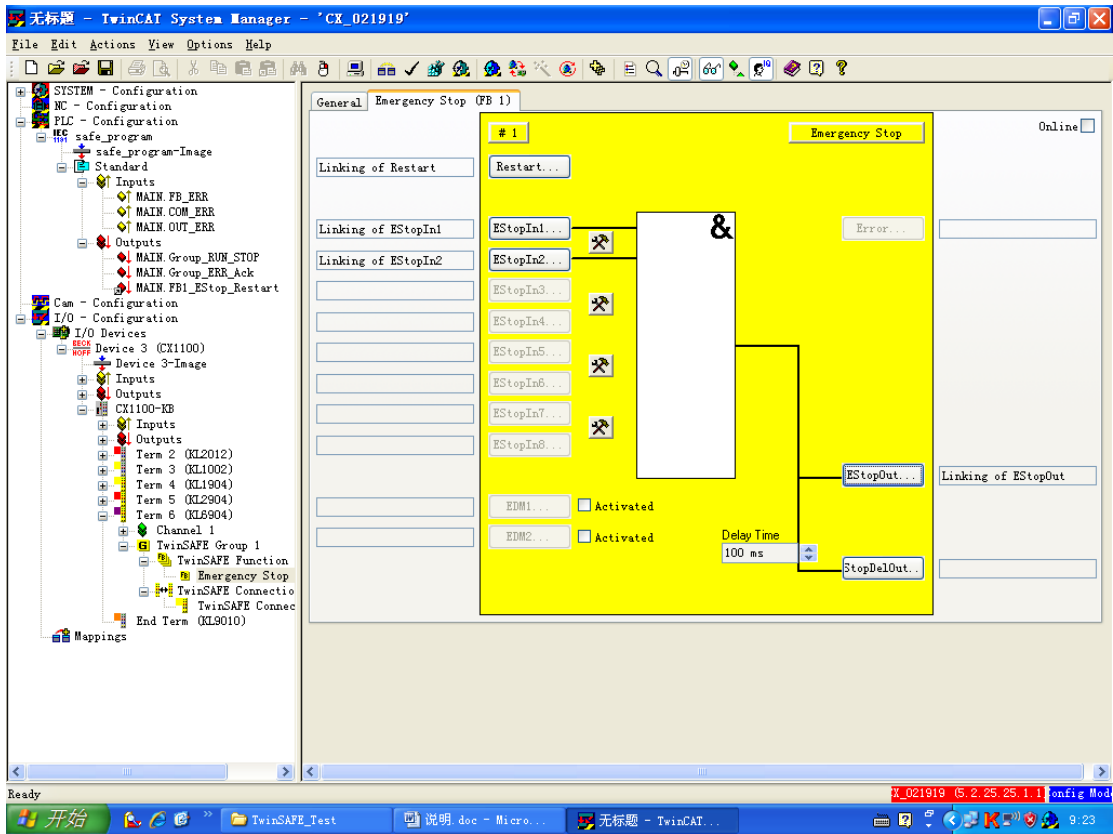
Link 急停 FB 的 EStopIn。



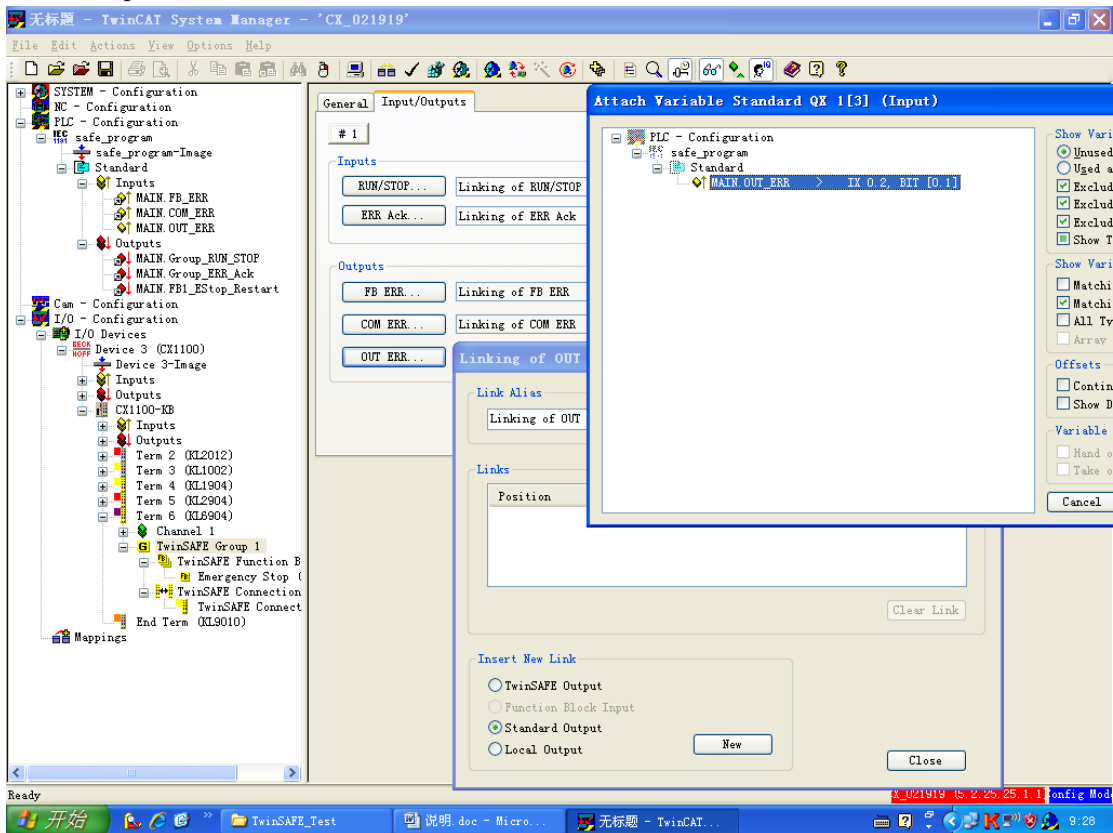


Link 急停 FB 的 EStopOut。(KL2904 输出有负载检测，暂用 KL2012 代替)

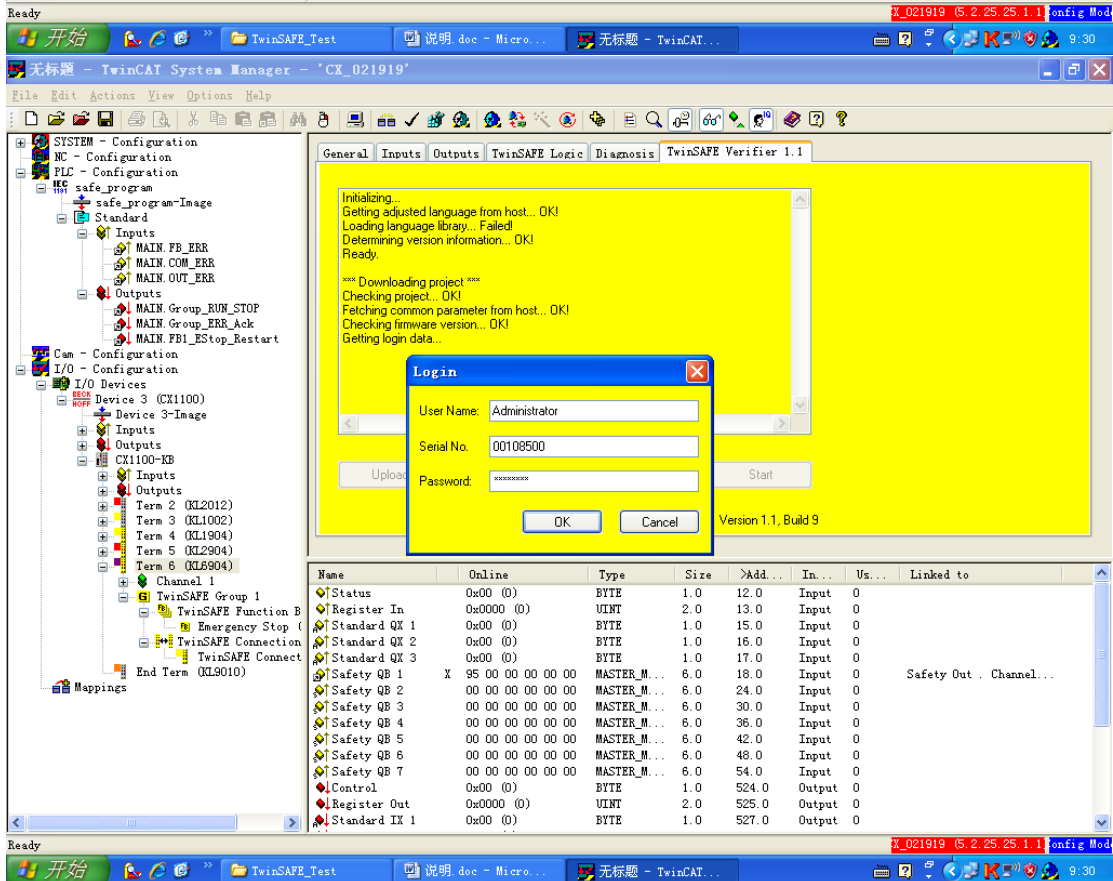
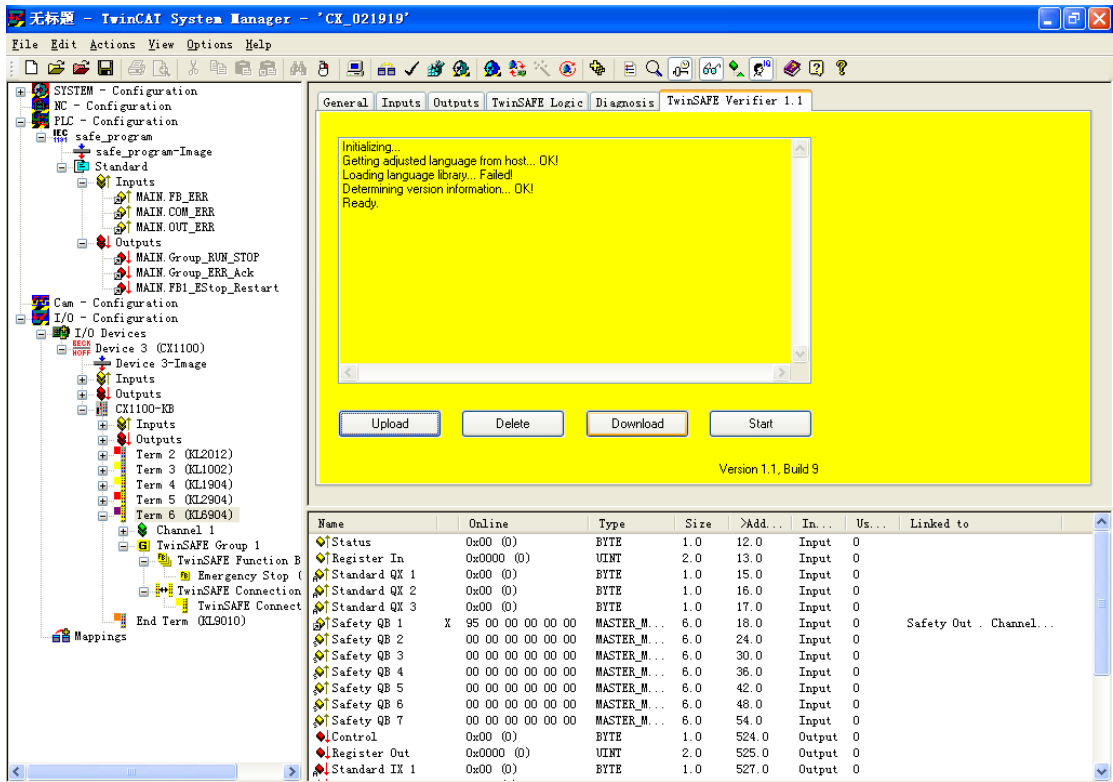




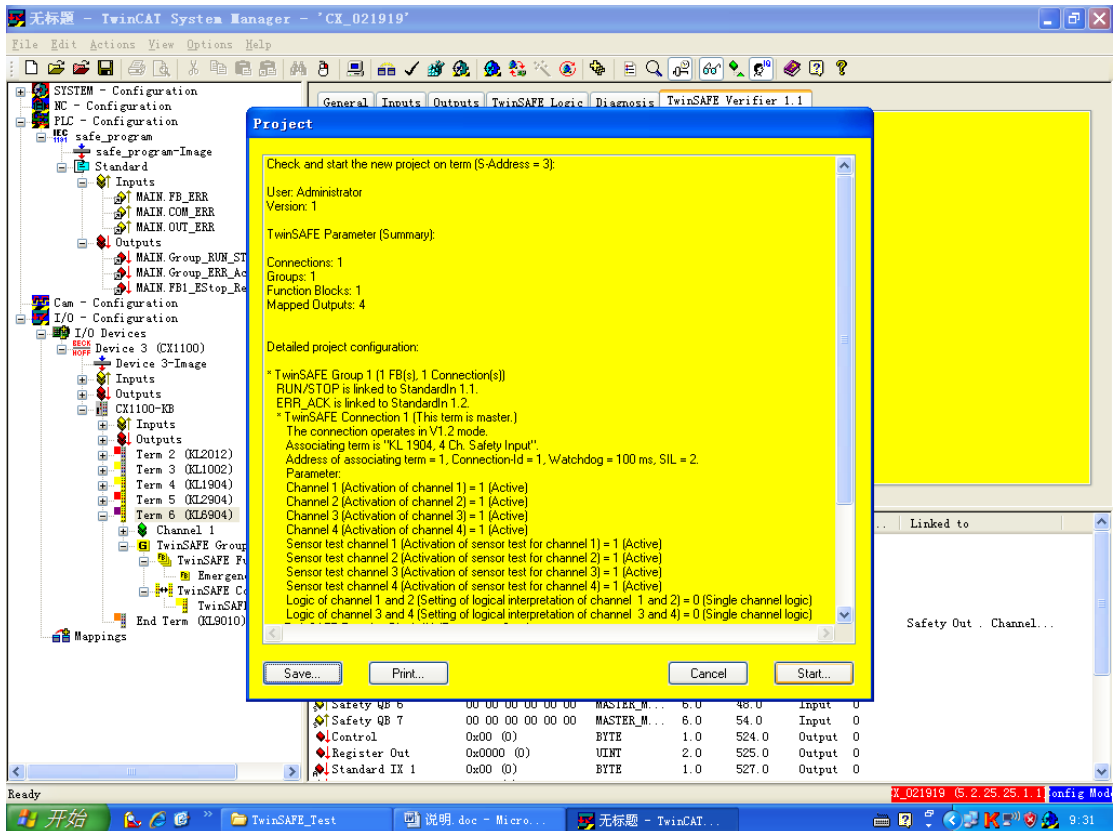
Link Group 的输入输出。



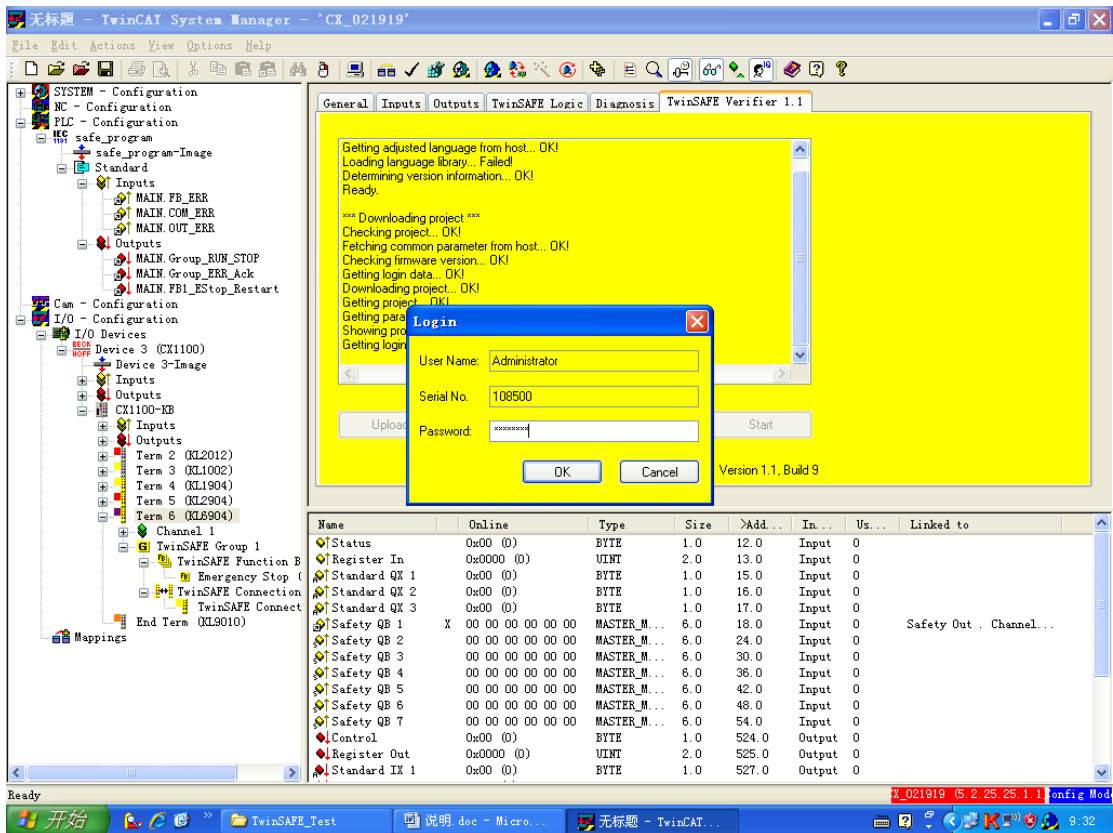
6 对 BK6904Download 配置。



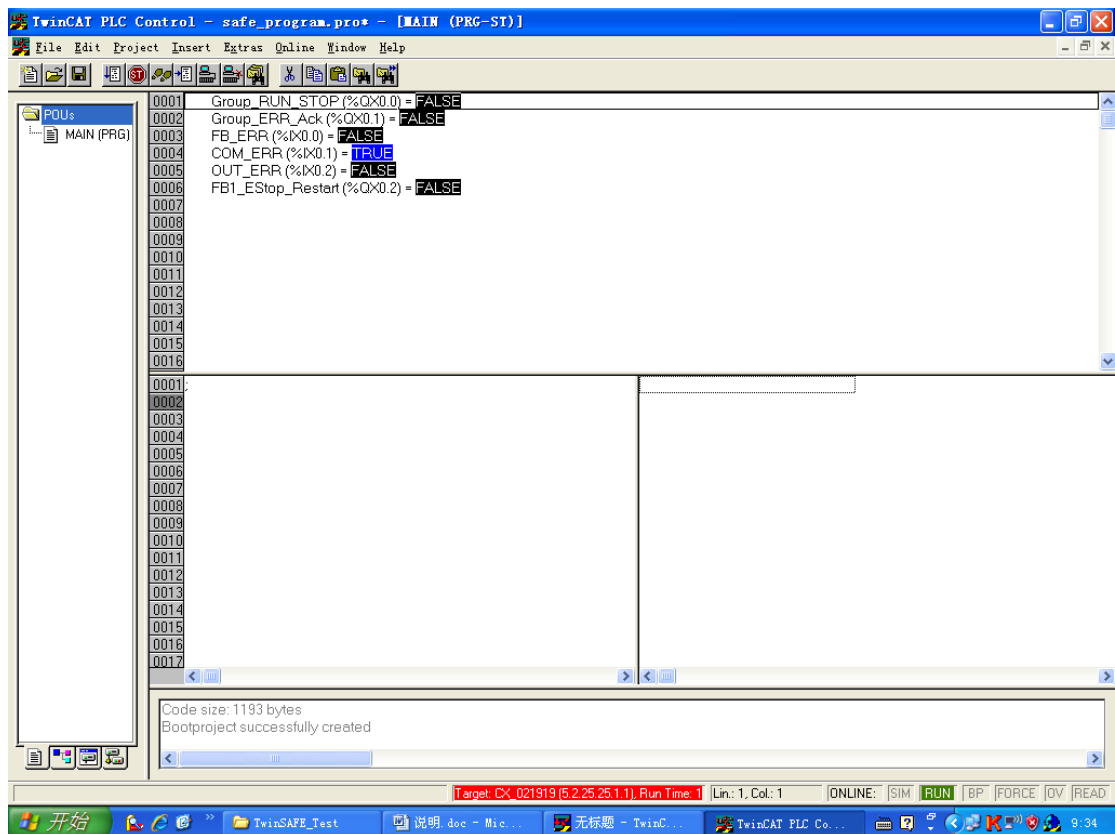
User Name: Administrator SN: KL6904 的序列号 Password: TwinSAFE



Start!



- Mapping->Activate->RUN
- Download PLC program -> RUN



KL1904 的 input1/input2 接通, Group_RUN->Group_ERR_Ack ↓ ->FB1_EStop_Restart ↓
这时 KL2012 的 ch1 通道亮 (FB1 中 EStopOut)。当 input1 或 input2 有一个去掉后 (相
当于有一个急停按钮被按下), KL2012 停止输出。

附图 Online 信息:

无标题 - TwinCAT System Manager - 'CX_021919'

File Edit Actions View Options Help

SYSTEM - Configuration
 NC - Configuration
 PLC - Configuration
 safe_program
 safe_program-Image
 Standard
 Can - Configuration
 I/O - Configuration
 I/O Devices
 Device 3 (CX1100)
 Device 3-Image
 Inputs
 Outputs
 CX1100-KB
 Inputs
 Outputs
 Term 2 (KL2012)
 Term 3 (KL1002)
 Term 4 (KL1904)
 Term 5 (KL2904)
 Term 6 (KL8904)
 Channel 1
 TwinSAFE Group 1
 TwinSAFE Function B
 Emergency Stop (E...)
 TwinSAFE Connection
 TwinSAFE Connect
 End Term (KL9010)
 Mappings
 safe_program (Standard) - Device
 Device 3 (CX1100) - Device 3 (CX)

General Input/Outputs

1 Status: RUN Online

Inputs

RUN/STOP... 1
 ERR Ack... 0

Outputs

FB ERR... 0
 COM ERR... 0
 OUT ERR... 0

Server (Port)	Timestamp	Message
TCPLC (801)	2009-7-23 8:36:12 875 ms	PLC Download: 17 Symbols, 11 DataTypes
TCPLC (801)	2009-7-23 8:35:38 424 ms	PLC Download: 17 Symbols, 11 DataTypes
TcSysSrv (...)	2009-7-23 8:35:35 260 ms	TwinCAT System Restart initiated from AmzNetID: 10.60.2.3.1.1 port 32785.

无标题 - TwinCAT System Manager - 'CX_021919'

File Edit Actions View Options Help

SYSTEM - Configuration
 NC - Configuration
 PLC - Configuration
 safe_program
 safe_program-Image
 Standard
 Can - Configuration
 I/O - Configuration
 I/O Devices
 Device 3 (CX1100)
 Device 3-Image
 Inputs
 Outputs
 CX1100-KB
 Inputs
 Outputs
 Term 2 (KL2012)
 Term 3 (KL1002)
 Term 4 (KL1904)
 Term 5 (KL2904)
 Term 6 (KL8904)
 Channel 1
 TwinSAFE Group 1
 TwinSAFE Function B
 Emergency Stop (E...)
 TwinSAFE Connection
 TwinSAFE Connect
 End Term (KL9010)
 Mappings
 safe_program (Standard) - Device
 Device 3 (CX1100) - Device 3 (CX)

General Emergency Stop (FB 1)

1 Emergency Stop Online

Restart...
 EStopIn1...
 EStopIn2...
 EStopIn3...
 EStopIn4...
 EStopIn5...
 EStopIn6...
 EStopIn7...
 EStopIn8...
 EStopOut... 1
 StopDelOut... 1

Status: RUN
 Error...
 Error: 0000 0000

EDM1... Activated
 EDM2... Activated
 Delay Time: 100 ms

Server (Port)	Timestamp	Message
TCPLC (801)	2009-7-23 8:36:12 875 ms	PLC Download: 17 Symbols, 11 DataTypes
TCPLC (801)	2009-7-23 8:35:38 424 ms	PLC Download: 17 Symbols, 11 DataTypes
TcSysSrv (...)	2009-7-23 8:35:35 260 ms	TwinCAT System Restart initiated from AmzNetID: 10.60.2.3.1.1 port 32785.